

# Greenwood Pavilion

## 1230 U.S. Hwy 31 N Greenwood, IN

**NISSINK**  
COMMERCIAL REAL ESTATE



- Adjacent to Greenwood Park Mall - 1.3M SF
- Rare Big Box Availability at THE Retail Bulls-Eye
- Two Spaces Available 31,000 and 35,000 SF
- Stoplight Intersection Access From US 31

| Demographics       | 5 Miles  | 10 Miles | 20 Miles  |
|--------------------|----------|----------|-----------|
| Population         | 204,745  | 455,496  | 1,310,000 |
| Median HH Income   | \$80,694 | \$75,219 | \$73,215  |
| Daytime Population | 57,097   | 206,352  | 591,722   |

Source: Applied Geographic Solutions

For more information, contact:

Evan Butz  
317-735-0077 Ext. 3  
evan@niessinkcommercial.com

Connie Niessink  
317-735-0077 Ext. 1  
connie@niessinkcommercial.com

PARTNER **XTEAM**  
RETAIL ADVISORS

8365 Keystone Crossing, Suite 106, Indianapolis, IN 46240

Information contained herein has been obtained from sources deemed reliable but is not guaranteed and is subject to change without notice



# Greenwood Pavilion



| SUITE | TENANT NAME          | SQ FT  |
|-------|----------------------|--------|
| 1230  | Crunch Fitness       | 50,199 |
| 1230A | Available            | 31,346 |
| 1230B | Value City Furniture | 40,554 |
| 1230C | Davids Bridal        | 10,000 |
| 1234  | Vitamin Shoppe       | 3,300  |
| 1244  | Verizon Wireless     | 3,958  |
| 1256  | Guitar Center        | 15,000 |
| 1260  | Available Soon       | 35,007 |



**Ashley**  
HOMESTORE

**Loews Blvd**

**33,607 AADT**

**31,346 SF  
Available**

**VCF** VALUE CITY FURNITURE

**VCF** VALUE CITY FURNITURE

**the Vitamin Shoppe**

**CRUNCH**

**DAVID'S**  
BRIDAL

**verizon**

**Guitar Center**

**JOANN**

**35,007 SF  
Available Soon**

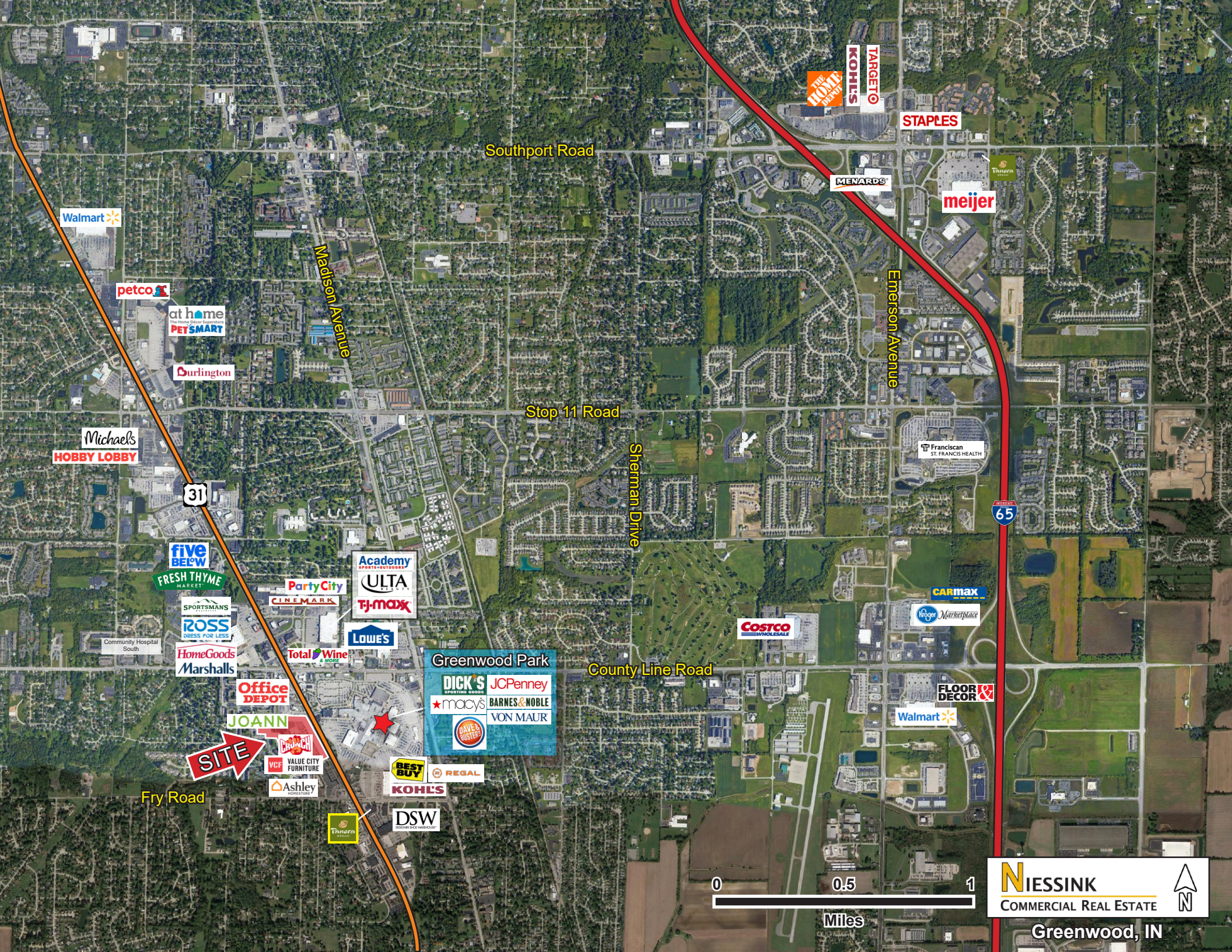
**JOANN**

**33,305 AADT**

**31**

**Greenwood Park Mall**





**SITE**

**Greenwood Park**

DICK'S SPORTING GOODS | JCPenney  
 macy's | BARNES & NOBLE  
 VON MAUR  
 DAVE & BUSTER'S